



WINTHROP PRIMARY SCHOOL
Learn and Grow Together
Early Childhood Parent Handbook





CONTENTS

School Information and Dates	3
School Vision, Curriculum Statement and Curriculum Links	4
Positive Behaviour Support	5
Early Childhood and School Communications.....	6
English as an Additional Language	7
Health Services.....	8
Intentional Learning through Play.....	9
Attendance.....	10
Before School Starts and Early Childhood Classroom Practices	11
What to Bring to Kindergarten	12
What do I Learn at Kindergarten	13
What to Bring to Pre-Primary.....	14
What do I Learn at Pre-Primary	15
Other Important Information	16
Helpful Hints.....	17

WINTHROP PRIMARY SCHOOL

SCHOOL DETAILS

Jackson Avenue,
Winthrop WA 6150
Telephone: 9312 4950
Website: www.winthropps.wa.edu.au
Email: Winthrop.ps@education.wa.edu.au

KINDERGARTEN SESSION TIME

Doors open 8:35am, start: 8.50am – Finish: 2.50pm

PRE-PRIMARY SESSION TIMES:

Doors open 8:35am, start: 8.50am – Finish: 3.00pm

TERM DATES FOR CHILDREN:

Please check the Education Department website www.education.wa.edu.au /future term dates
Public Holidays and School Development Days will be advised via Connect & Facebook.
Students do not attend on School Development Days.

ATTENDANCE SCHEDULE AND GROUPS:

PUGGLES

Block A, All day Monday, Tuesday and Wednesdays of
EVEN weeks (Weeks 2, 4, 6, 8, 10 of each term)
FIRST DAY: 10th February 2025

JOEYS

Block A, All day Thursday, Friday and Wednesdays of
EVEN weeks (Weeks 2, 4, 6, 8, 10 of each term)
FIRST DAY: 6th February 2025

CYGNETS

Block A, All day Monday, Tuesday and Wednesdays of
ODD weeks (Weeks 1,3,5,7,9 of each term)
FIRST DAY: 5th February 2025



SCHOOL VISION STATEMENT

At Winthrop Primary School we strive to be a school which works in partnership with the community to support all students in becoming successful learners, confident and creative individuals and active and informed citizens.

EARLY CHILDHOOD CURRICULUM

Winthrop Primary School follows the Department of Education Kindergarten Curriculum and the West Australian Curriculum.



Curriculum Guidelines <https://k10outline.scsa.wa.edu.au>

By providing a program that involves intentional and explicit teaching and learning of English, Mathematics, Humanities and Science through play-based learning we establish a positive beginning to school learning that ensures continuity throughout their school career. In the early years of schooling at Winthrop Primary School, priority is given to Literacy and Numeracy development, as these are the foundations on which further learning is built.

Early childhood staff adopt a holistic and integrated approach, which focuses on social and emotional well-being, speech and language development, physical activity and motor skill development as well as the development of safe and healthy personal practices.

Children will receive a semester report outlining their progress against the Curriculum. Further parent information can be found below.



Early Years Learning Framework

<https://www.education.gov.au/early-years-learning-framework-0>

POSITIVE BEHAVIOUR SUPPORT

Our goal is to create a school that has safe, positive learning environments where students are engaged and successful. We strive to develop a culture in which every student experiences a sense of belonging to the school community, of being known and understood as an individual, and of staff who care about each student's overall progress and wellbeing.

Our school-wide expectations through our WPS Behaviour Matrix encompass the values of:



BUZZY



SUNNY



BILLIE



ARCHIE

CARE

RESPECT

RESPONSIBILITY

ACHIEVEMENT

ANYWHERE/ ANYTIME

- We show kindness and empathy and are considerate of others
- We care for the space we are in
- We care for and are sustainable with resources
- We take pride in ourselves and our school

- We listen respectfully and actively
- We use manners
- We use respectful language
- We follow directions
- We use appropriate voices
- We take turns and share
- We respect other peoples' right to privacy
- We keep our hands, feet and objects to ourselves

- We take care with equipment, using it and returning it as directed
- We follow the Digital User Agreement
- We follow the Uniform Policy
- We take responsibility for our own learning and behaviour
- We are responsible for our own belongings

- We give our best effort and have a 'can-do' attitude
- We aim to discover and engage with experiences
- We are willing to learn from our mistakes
- We celebrate the achievement of others
- We act in a manner that encourages positive feedback from others
- We ask for help after trying to problem-solve things ourselves

LEARNING AREAS

- We take pride in our work

- We respect our peers' right to learn
- We work cooperatively with our peers

- We move around, and enter and exit learning areas appropriately

- We are prepared for learning
- We set learning goals and work towards achieving them

OUTSIDE

- We put our rubbish in the bin
- We play fairly with others

- We follow canteen procedures
- We respect our natural environment

- We run on green areas only
- We follow recess and lunch procedures
- We play in designated areas
- We are Roadwise

- We keep our school clean
- We show positive sporting behaviour

PARENT MEETING & PERSONAL ITEMS LIST

Each class will hold a class meeting at the beginning of each year. During this time the class teacher will provide further information specific to your child's classroom, for example routines, learning programs and practices. Families are provided with a personal items list, alternatively it can be accessed on the website. **Please bring all the items on the booklist to the classroom.** If you have any difficulty purchasing any item on the booklist, please inform your class teacher.

CONNECT – WE ARE A CONNECT SCHOOL

Connect is a secure, efficient and online environment provided by the Department of Education for staff, students and parents for access to important aspects of schooling. It allows us to communicate quickly and easily with parents through 'Notices' that are accessible through the Connect Now App and more detailed information available through the Connect Website. Notification of the Notices are sent directly to your email address through the Connect Platform.

The primary carer for each student will be issued a secure username (known as a P number) and a password. Connect allows parents to communicate easily with teachers, stay informed about school activities and events and securely access your notices anytime, anywhere from any device. We encourage carers to advise of student absences through Connect, Student reports are accessible to parents through Connect.

EMAILS

Class teachers may use emails to share information, make appointments and celebrate success. Emails won't be responded to immediately as teachers are teaching, therefore anything of an immediate nature should be addressed with the teacher either by phone or personally at drop off or pick up time.

LATEST NEWS

Our newsletter is updated in real time and is accessible through the school website. Notices are sent out through Connect periodically to remind parents to check 'Latest News' and to advise when important or numerous updates have been made.

Latest News is the first place to check for current information and news about school events, activities and messages from the Principals.

FACEBOOK

We invite you to follow our school Facebook Page. In response to community feedback, we launched a Facebook page in 2021. This page is for reminders, celebrations and notifications. Our primary place for school information will be through Latest News or the school website. Find us @WinthropPrimarySchoolOfficial

ENGLISH AS AN ADDITIONAL LANGUAGE



The importance of maintaining home language for English as an Additional Language Students

Language shapes the way we view our world and our place within it. Language is also linked to our personal identity and the way we relate to others and it is through this we make sense of our world.

Research shows strong links between children's oral language, understanding of print and written language and their success in learning to read and write. Before children can learn to read and write independently, they need to be able to hear and say the sounds.

It is vital for students who speak English as Additional Language to maintain their home language. Students who have the opportunity to maintain their home language will find this beneficial as they are better able to think and organise their thoughts in a language that makes sense to them. Also, acknowledging student's prior knowledge, skills and understandings in their home language will help them maintain their feelings of self-worth and confidence in their ability to learn another language.

Please ensure the front office has the details of your child's first language spoken at home. This will enable the school to access funding and support, allowing us to better meet the needs of your child in the classroom.



HEALTH SERVICES

Winthrop Primary School has a range of professionals that provide services to maintain the health and wellbeing of children, including:

Registered School Nurse: visits school to carry out scheduled health checks. Kindergarten children are seen on their allocated school day.

Parents will be given a questionnaire and consent form to complete prior to the nurses visit.

Caralee Dental Checks: Begin in Pre-Primary. Parents will be asked to complete a consent form prior to the initial consultation. You can contact Caralee Dental Therapy on 9337 6818.

School Psychologist: Available to provide services and support teachers and students in the school setting.



Early Intervention



Early intervention can be a key indicator in success for young children. At Winthrop Primary School we support the cognitive, social and physical development of all children. If there is a need to refer to children to specialists i.e. Speech Pathologist, Occupational Therapist, Physiotherapist, Pediatrician or Psychologist, teachers will speak with parents to discuss. We strongly encourage parents act immediately on referrals as wait times can be significant and importantly, to reduce the impact on your child's learning.

Medication



Staff are unable to administer medication without written consent. A 'consent to Administer Medication' form is available on the school website and must be completed and signed before a staff member can give medication. Children are not allowed to self-administer medication. For children with ongoing medical needs, a 'Medical Action Plan' will be developed and approved by relevant health specialists and school administration.



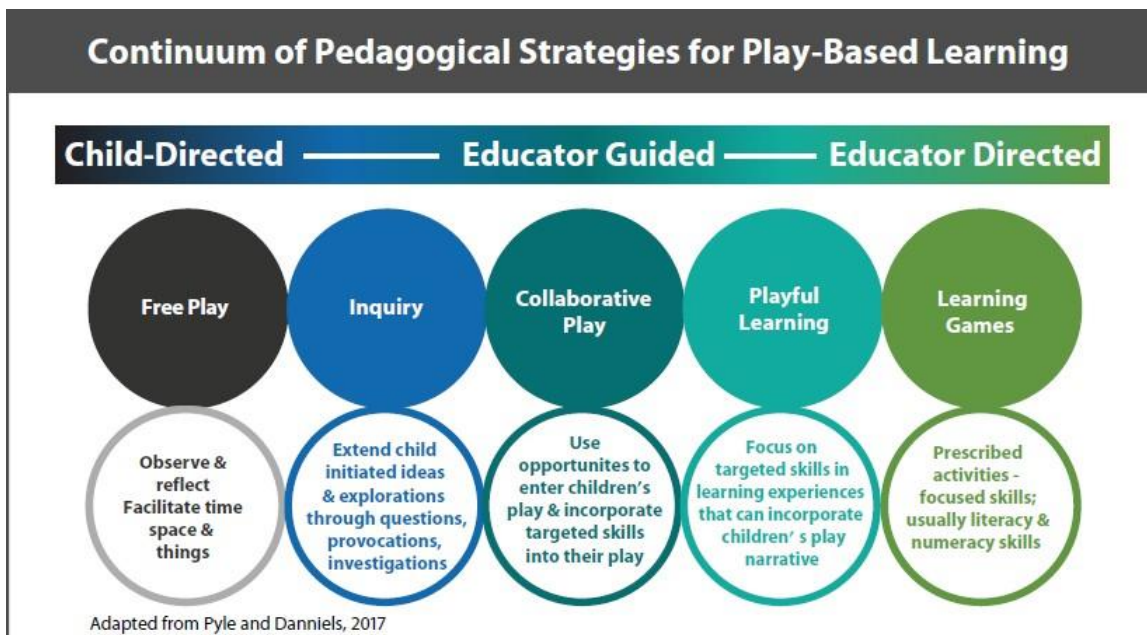
INTENTIONAL LEARNING THROUGH PLAY

Your child is naturally curious. Right from birth, they are wondering and exploring. They are watching and listening, moving and feeling. The daily interactions and experiences you child will share at kindergarten is how they learn about the world around them. These interactions involve play.

Play is a powerful and important activity. It has a natural and positive influence on children's social, physical, emotional and cognitive development. The BEST learning happens when children play. It is important that children play every day.

Children find many things to play with both inside and outside, all they need is imagination. We encourage children to use their imagination and creativity through play. Whether it is playing dress-ups, constructing grand designs with building blocks, singing songs, telling stories, or having fun with sand and water, play is built into everyday routines in kindergarten.

Kindergarten and Pre-Primary are environments where children learn through play. A play-based learning environment encourages talking, reading, thinking and writing. Through this your child sees literacy and numeracy as part of their everyday experience and builds the foundation for formal learning.



ATTENDANCE

DROP OFF AND PICK UP



Doors open at **8:35am** so the children can prepare for the day. All children must be delivered to and picked up from the classroom by an adult. Please be on time to ensure no unnecessary distress for your child. If someone else is to collect your child, please make sure you write details in the pick-up book in the morning. This is located within each classroom. If you do arrive late or pick up early, you will need to sign in / out at the office prior to coming to the classroom.



By being punctual, when collecting children from school, it makes the transition from home to school a pleasurable experience. Children become secure in their new environment knowing they will be collected at the same time each day. If you are going to be late, please call and let us know so we can let the child know and minimise anxiety. Children are kept inside at the end of each session until parents arrive. If you arrive later than 10 minutes after the completion of the day's session your child will need to be collected from the school office.

ABSENCES FROM SCHOOL



If your child is unwell, please do not send them to kindergarten as we do not have adequate facilities to care for them and this reduces the likelihood of germs spreading. All children should be well enough to participate in both indoor and outdoor programs.

Department of Education procedures mean that a written note **must** be given for absences, contact the front office or parents can now send absentee notes for their child from the Connect homepage. If your child is late, you must collect a late note from the front office. Parents of children leaving the school at any time during the day for appointments or any other reason need to collect a release note from the school front office to hand to the teacher prior to leaving and sign the child both out and in (if returning).



If your child is absent whilst overseas/holidays during school term, you must place this absentee in writing to the teacher prior to leaving.

BEFORE SCHOOL STARTS

Early interactions make an enormous difference to your child's lifelong learning and parents play the most important role as a child's first teacher in the early years before school. Everyday family life provides many opportunities for children to learn and thrive as they learn about healthy eating, being active, sharing affection and having fun together. Parents help their child learn when they encourage their child to believe in themselves and enjoy new experiences together.

SO, WHAT CAN YOU DO AS A PARENT?

- Play with your child whenever you can and encourage your child to play and explore.
- Get down and dirty in the sandpit or get creative with some art or craft projects, encourage them to hold pencils, paintbrushes and crayons correctly.
- Talk with and listen to your child as part of your normal everyday activities.
- Talk about what you are doing, what will happen that day, and the world around you. Ask for their opinion and encourage them to share their ideas.
- Count with your child. This can be a fun activity in the car, at home or while you are doing chores or outdoor activities. Count forwards and backwards, count out their steps and items they are playing with. Math should be included in everyday experiences.
- Read aloud to your child every-day. Make it part of your daily routine.
- Cook, measure, write shopping lists together. Expose your child to several types of print and the different opportunities to write.
- Go on outings together and talk about what they see and the world around them.
- Encourage your child to be independent by dressing themselves and putting away their things after playing.

EARLY CHILDHOOD CLASSROOM PRACTICES

BIRTHDAYS

We enjoy taking part in your child's celebrations. We will be celebrating with a 'birthday book' and you will receive more information about this idea from your teacher in 2025. Please do not bring cake and lollies to school as per our schools Healthy Eating Policy.

TOYS

Children often like to bring in special personal items from home to share with friends. We ask parents to support our 'No Toys' policy for kindergarten and Pre-Primary and keep these special items at home. Occasionally children may be asked to bring something special to school, you will be notified if it is your child's turn.

PARENT HELP

Parents and family members are always welcome to come in for parent help. Your classroom teacher will provide a roster and suitable times for this at the beginning of each term.

MONEY COLLECTION

Class teachers do not collect money for school-based activities. Please return any permission slips and payment directly to the office.

WHAT TO BRING TO KINDERGARTEN

To ensure that every day is a success for your child, please ensure they have the following items...

PLEASE CLEARLY LABEL HATS, LUNCH BOXES & THEIR LIDS, FRUIT CONTAINERS & JUMPERS.

AT THE BEGINNING OF YEAR:

HATS: The school has a **NO HAT, NO PLAY POLICY**. This means that children's outdoor activities will be confined to shaded areas if no hat is available. Wide brimmed green school hats are available from the uniform shop. School hats should be provided on the first day of school and will remain at school. Hats will be sent home at the end of every term for cleaning.

SUNSCREEN: Sunscreen should be applied before school, however, roll on sunscreen can be left at school for touch-ups during the day. It is your child's responsibility to apply, we recommend practicing this at home.

PILLOWS: A pillow to leave at school, no larger than 27x27cm (due to storage)

EVERYDAY:

SCHOOL BAG: A bag for personal belongings. In Kindergarten backpacks are not the preferred type of bag. A firm sided recycling bag is highly recommended. They are a decent size for holding work, jumpers and lunchboxes and are much easier for children to access and handle with independence.

CLOTHING: Accidents do happen, please provide a spare set of clothing, including underwear. This will remain in your child's school bag at all times, if an accident occurs your child will change into this clothing.

CRUNCH & SIP: This should be a small piece of fruit or vegetables and should take no more than 5 minutes to consume. Please ensure it is packed separately to morning tea.

MORNING TEA: Fruit, vegetables, cheese and crackers, yoghurt muesli bars or healthy muffins are great options. The amount of food provided should be able to be consumed in 5-10 minutes.

WATER BOTTLE: Named and easily identifiable for your child.

LUNCH: Children will need a packed lunch as there is no access to the canteen. Lunches should be nutritious and healthy; this will support our school priority in health and fitness. Please ensure that your child is able to open their lunch box and show your child how to open prepackaged food. In support of our sustainability focus any rubbish will be sent home to be recycled appropriately. Remember to add spoons and forks if necessary.

Please ensure your child's lunch is an amount that can consume in 10 minutes. This helps to stop children getting upset when they are unable to eat all of the food in their lunchbox or alternatively when they miss out on play because they are still eating.

Please see your classroom teacher for further instructions regarding any other items that should be brought to school daily.

WHAT DO I LEARN AT KINDERGARTEN?

FIRSTLY, AND MOST IMPORTANTLY

- I learn to be away from my parents, and this may take some time
- I learn to work with teachers and other adults
- I learn to work alone
- I learn to share and co-operate
- I learn simple routines and rules
- I learn to persevere and complete an activity
- I learn to be independent BUT not be afraid to ask for help
- I learn to select and choose
- I learn to communicate with others
- I learn to respect ideas, property and feelings of other children in my class and in the playground
- I learn that I am special and have something unique to offer others
- I learn to be eager and excited to experience and learn new things

I may get dirty, wet or even a little hurt while I am finding out about things, but if I make a discovery then it's been worth it.

BEFORE I CAN READ, WRITE OR DO MATHEMATICS

I NEED TO KNOW

- What a book is
- That a book contains words and pictures
- That words can be read
- That a book has a beginning, middle and end, a back and a front
- I may begin to understand that reading (and writing) is done from left to right, top to bottom, and each printed word represents one spoken word
- I need to learn to love and care for books in order to want to read
- What happens when I put pencils and paint to paper
- To be able to hold a pencil comfortably
- How to scribble and draw shapes before I am able to write letters
- The name of numbers
- To be able to say numbers in the correct order
- Know the names of shapes and colours
- To sort things that are alike into groups
- That things can be put into order, e.g. from smallest to largest

*I may not learn all these things before I am five, but I will learn some.
Remember I will learn at my own rate and this may be faster or slower than others!*

WHAT TO BRING TO PRE-PRIMARY

To ensure that every day is a success for your child, please ensure they have the following items...

PLEASE CLEARLY LABEL HATS, LUNCH BOXES & THEIR LIDS, FRUIT CONTAINERS & JUMPERS.

AT THE BEGINNING OF YEAR:

HATS: The school has a **NO HAT, NO PLAY POLICY**. This means that children's outdoor activities will be confined to shaded areas if no hat is available. Wide brimmed green school hats are available from the uniform shop. School hats should be provided on the first day of school and will remain at school. Hats will be sent home at the end of every term for cleaning.

SUNSCREEN: Sunscreen should be applied before school, however roll on sunscreen can be left at school for touch-ups during the day. It is your child's responsibility to apply, we recommend practicing this at home.

CUSHION: A small cushion to leave at school, this will be sent home at the end of each term for cleaning.

EVERYDAY:

SCHOOL BAG: A bag for personal belongings. In Pre-Primary the school backpack is the preferred type of bag. They are a decent size for holding work, jumpers, reading books and lunchboxes and are much easier for children to access and handle with independence.

CLOTHING: Accidents do happen, please provide a spare set of named clothing, including underwear. This will remain in your child's school bag at all times, if an accident occurs your child will change into this clothing.

CRUNCH & SIP: This should be a small piece of fruit or vegetables and should take no more than 5 minutes to consume. Please ensure it is packed separately to morning tea.

MORNING TEA: Fruit, vegetables, cheese and crackers, yoghurt muesli bars or healthy muffins are great options. The amount of food provided should be able to be consumed in 5-10 minutes.

WATER BOTTLE: Named and easily identifiable for your child.

LUNCH: Children will need a packed lunch. Lunches should be nutritious and healthy, this will support our school priority in health and fitness. Please ensure that your child is able to open their lunch box and show your child how to open prepackaged food. To support of our sustainability, focus any rubbish will be sent home to be recycled appropriately. Remember to add spoons and forks if necessary. **Canteen lunches can be ordered online Wednesdays, Thursdays and Fridays through quickcliq.com.au** Please ensure your child's lunch is an amount that can consume in 10 minutes. This helps to stop children getting upset when they are unable to eat all of the food in their lunchbox or alternatively when they miss out on play because they are still eating.

Please see your classroom teacher for further instructions regarding any other items that should be brought to school daily.

WHAT DO I LEARN AT PRE-PRIMARY?

FIRSTLY, AND MOST IMPORTANTLY

- I continue to learn and practice all the skills I learned in kindergarten.
- I learn to share, co-operate and listen.
- I learn how to be a respectful, caring class member.
- I learn to communicate with peers, teachers, known adults and students from other classes.
- I will work on developing a strong mindset for learning. Where I am happy to make real attempts at new things, practice and show perseverance even when learning is tricky.
- I will learn to have a 'can do' attitude to my learning.

READING, WRITING & MATHEMATICS

IN PRE-PRIMARY I WILL

- Participate in pair, group and class discussions.
- Retell events and experiences. I will learn how to retell stories read using strategies taught to show my understandings.
- Use my knowledge of letters and sounds to read short, decodable texts and write familiar words, phrases and sentences.
- Begin to connect number names, numerals and quantities, initially to 10 and then 20 and beyond.
- Learn to solve number problems that involve adding, removing, grouping and sharing as well as continuing patterns using objects.
- Continue to develop fine motor skills needed for writing and pencil control and work on gross motor skills of balance, running, skipping, catching and throwing.
- Be given opportunities to learn and explore how technologies work and make sense of the world I live in.
- Be given opportunities to continue to build on my creative and critical thinking skills and be challenged to reach my full potential.

I may not learn all these things before I am six but I will learn some.
Remember I will learn at my own rate and this may be faster or slower than others!



OTHER IMPORTANT INFORMATION

CAMP AUSTRALIA (After School Care)

Winthrop Primary School has a before and after school program. Please contact Camp Australia on 1300 105 343 for more information, alternatively parent handbooks are available on the website or from the office. Please inform your child's teacher of the days you are using this service. The Camp Australia staff will deliver and pick up children from the Pre-Primary in the morning and afternoons as required.

PARENT PARTNERSHIPS

At Winthrop Primary School we believe that fundamental to effective learning is a strong, positive relationship between schools and families. We encourage you to become actively involved in your child's education by participating in parent help, school activities and decision-making groups such as the P & C and School Board.

UNIFORM: KINDERGARTEN

Uniforms are not compulsory in kindergarten. As some activities are messy and children can get wet during play we like children to be dressed in comfortable and easy wash clothes. Fancy dresses are unsuitable for climbing, playing and mat work. We like children to wear shoes that they can take off and put back on as necessary. Easy slip-on shoes, sandshoes or sandals are preferable. Thongs are not considered appropriate. Kindergarten t-shirts are available for purchase for \$22.00 each. These can be purchased at the Expo or from the front office during the year.

UNIFORM: PRE-PRIMARY

Children are to wear the school uniform. The dark green shirt with the mint curve and dark green shorts or skirts is the everyday uniform. Faction shirts can be worn on your child's sports lesson days and on school carnival days. If you don't know your child's faction, please contact the front office or see your child's teacher. Uniforms can be purchased from the school uniform shop. The uniform shop is open Tuesdays from 2:30pm – 3.15pm and is located next to the canteen in the undercover area. Order forms for school uniforms are available on the school website.

NUT AWARE

Our school is nut aware, with respect to students who suffer allergies to these products. Please avoid sending food that contains nuts as some children have contact anaphylaxis. You will be notified by your] classroom teacher of any allergies in your child's class.





HELPFUL HINTS

The following are some helpful hints for you to follow to help your child and teachers have a smooth start to the year.

- ⇒ A substantial breakfast is important, it helps activate our brains and bodies for learning.
- ⇒ Work with your child to recognise their name.
- ⇒ Help children learn how to independently undo and do up shoelaces or buckles and how to put on shoes and socks. Better still, send children in slip-on or velcro fastening shoes that fit correctly.
- ⇒ Teach children to attend to their own toileting needs if they are not already doing so. Staff do not provide toilet training, however it is recognised that young children do have accidents. Please provide a change of clothes, kept in your child's bag so accidents can be handled with minimum fuss.
- ⇒ Take an interest in the work your child brings home, talk together and listen to what your child has today. Ask questions like 'what was your favourite thing you did today? What was something fun you did today?'
- ⇒ To remove paint from clothes, first soak in cold water overnight, rub with bar of soap and then wash as normal. Hot water can result in permanent stains.
- ⇒ Please practice opening and closing back packs and lunch box containers and packing their bag so your child can do this independently at school.
- ⇒ Practice separation. This is especially important, especially at the beginning of the school year, as we do not want your child to become distressed. Staff are used to dealing with upset children. Each teacher has their own method of handling this situation; but often the child is more easily settled if you leave. There are many methods to distract them and you will be contacted if there is a need. Being punctual when dropping off and picking up helps to establish goodbye routines.